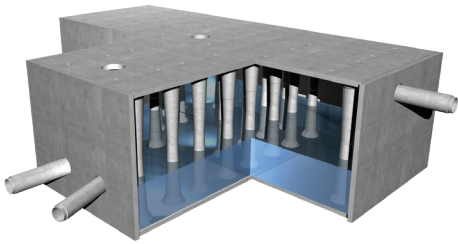
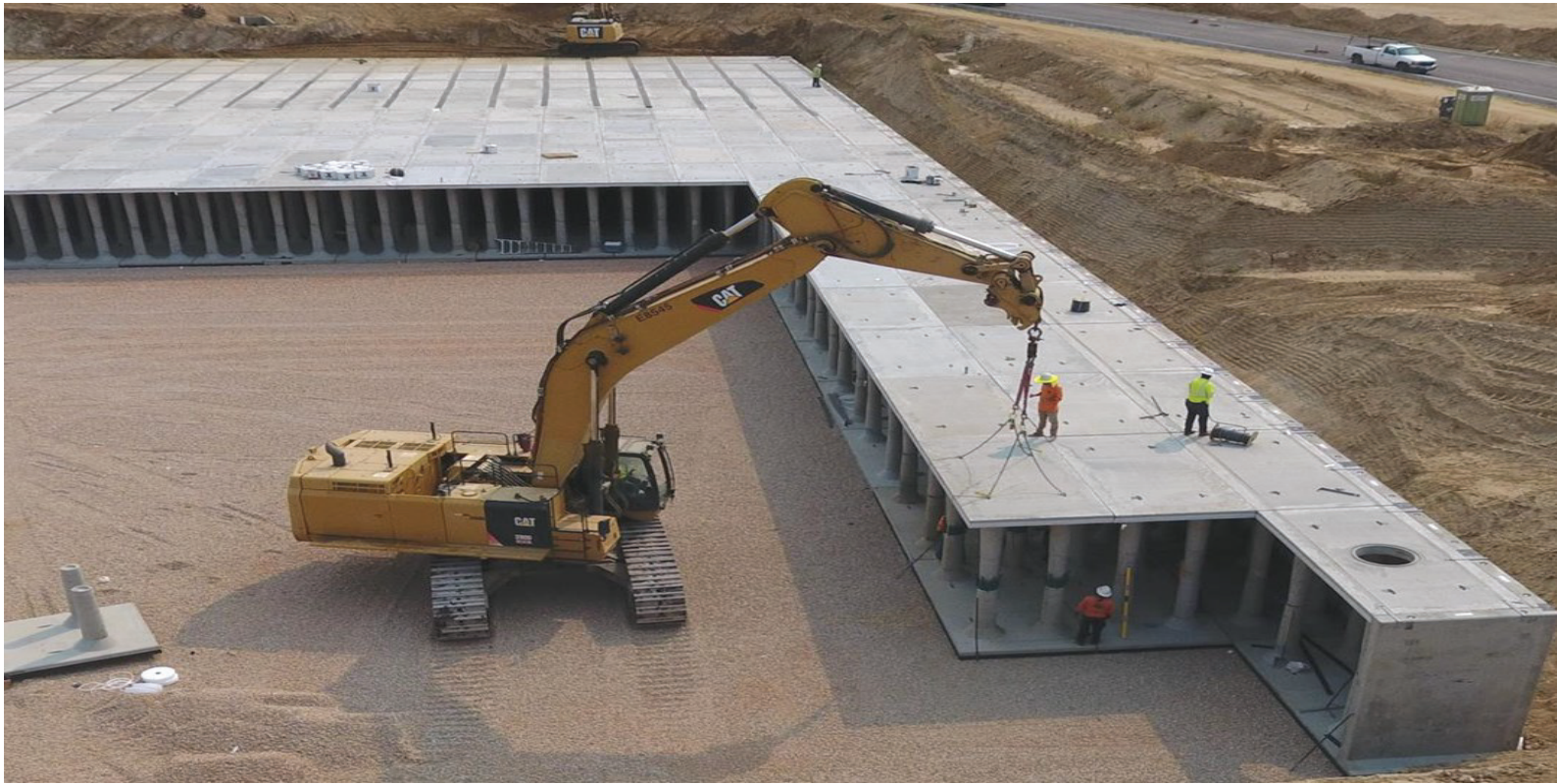
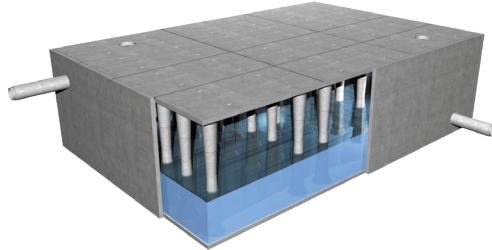


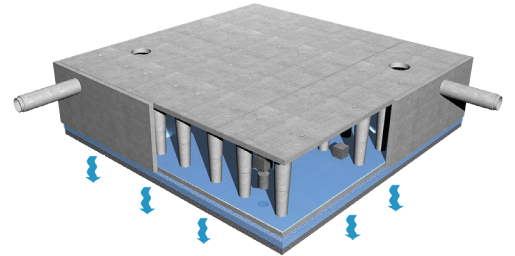
# **STORMPRISM**<sup>®</sup> Stormwater Management System



**STORMWATER DETENTION**



**WATER HARVESTING**



**STORMWATER INFILTRATION**

*Uniquely designed for efficient underground stormwater storage*

*Highly adaptable designs and dependable performance*

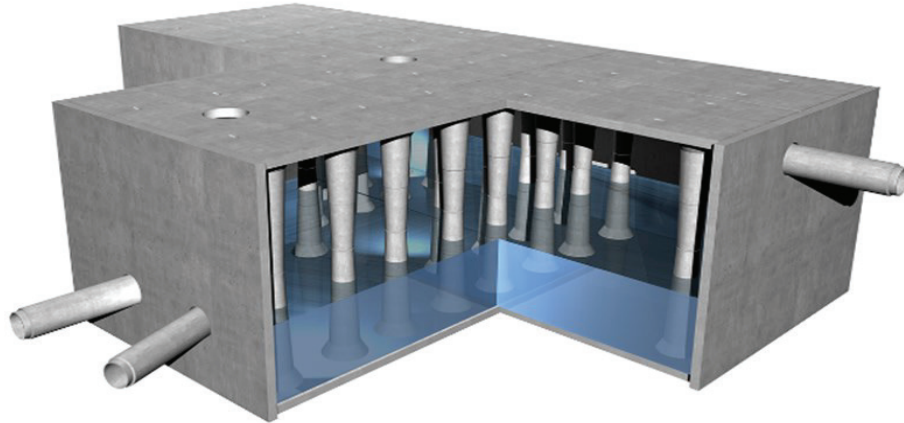




# STORMPRISM<sup>®</sup>

## Stormwater Management System

StormPrism is a novel precast concrete underground stormwater storage system designed specifically to create the maximum amount of stormwater storage volume within a given footprint. With its unique columnar design, StormPrism is able to handle as little as 6" and as much as 14' of cover with HS-20 live loads. StormPrism can easily be configured to fit virtually any site requirements.



### Unique Features:

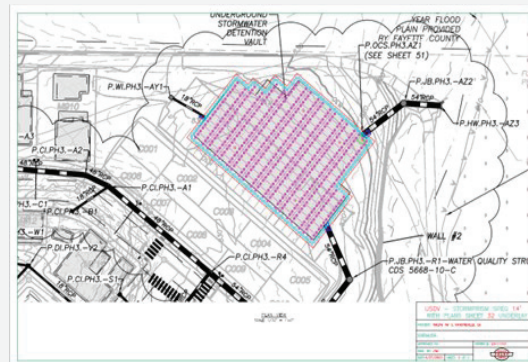
- All system modules are 8' x 16', allowing for simplified installation. No "special" modules that can complicate delivery and installation
- Internal module heights range from 4' to 14'
- Designed for cover heights 6" to 14' with HS-20 live load
- Open design minimizes potential to trap sediment and debris. No interior walls to impede equalization of stormwater
- Easy and safe to maintain
- Settlement bays are simple to incorporate
- Outlet control structures can be placed internally



Easily Maintained



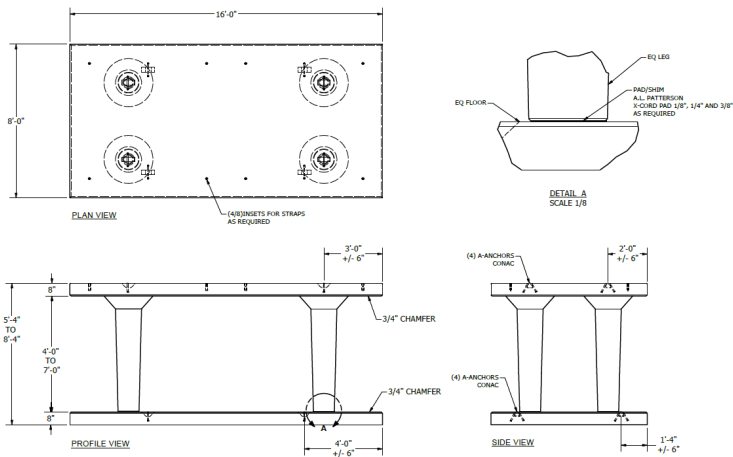
Open Design



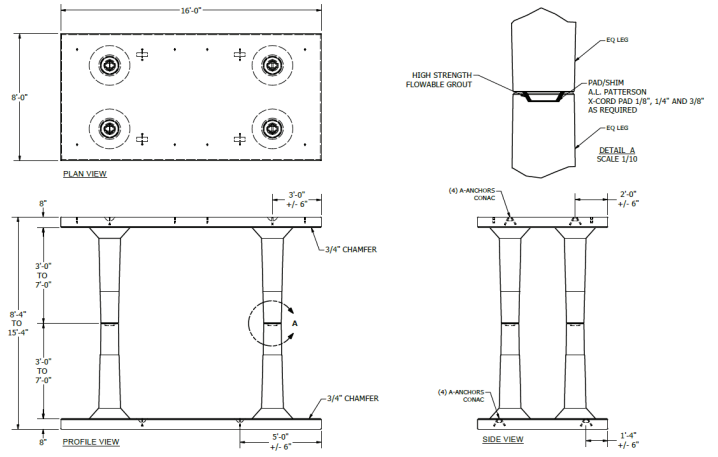
Design Layout Assistance



StormPrism Module 4' to 7' (interior)  
Single Stack—Top Section on Concrete Base Slab



StormPrism System 6' to 14' (Interior)  
Double Stack—Integral Bottom Slab



Every underground stormwater storage system layout is different due to required storage volumes, elevations, property shape, existing utilities and a myriad of other factors. Whether your system requires simple detention, infiltration, water harvesting or associated stormwater quality systems, your StormPrism Sales Engineer has the experience and resources to make your job easier.

Reach out to us with questions or support needs at

[StormPrism@FoleyProducts.com](mailto:StormPrism@FoleyProducts.com).

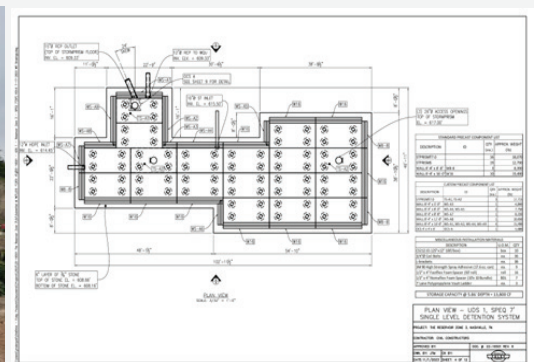
We can help you with your next project!



Unsurpassed Structural Capacity



Accelerated Installations



Highly Configurable



## **FOLEY PRODUCTS COMPANY**

In 1981, Foley Products Company, “FPC”, was established as a division of The Concrete Company of Columbus, Georgia. Throughout the years, FPC has continually strived to improve our facilities, products, processes and quality. Today, Foley Products Company holds a position of prominence in our industry and is proud of the roles we play in our customers’ successes. With facilities located across the western and southeastern US, Foley Products Company manufactures, sells, and delivers precast concrete manholes, catch basins, reinforced concrete pipe (round, arch, and elliptical), utility vaults, box culverts, and more.



**Foley Products Company • 208 Jefferson St. Newnan, GA 30263 • (770) 251-0296**

